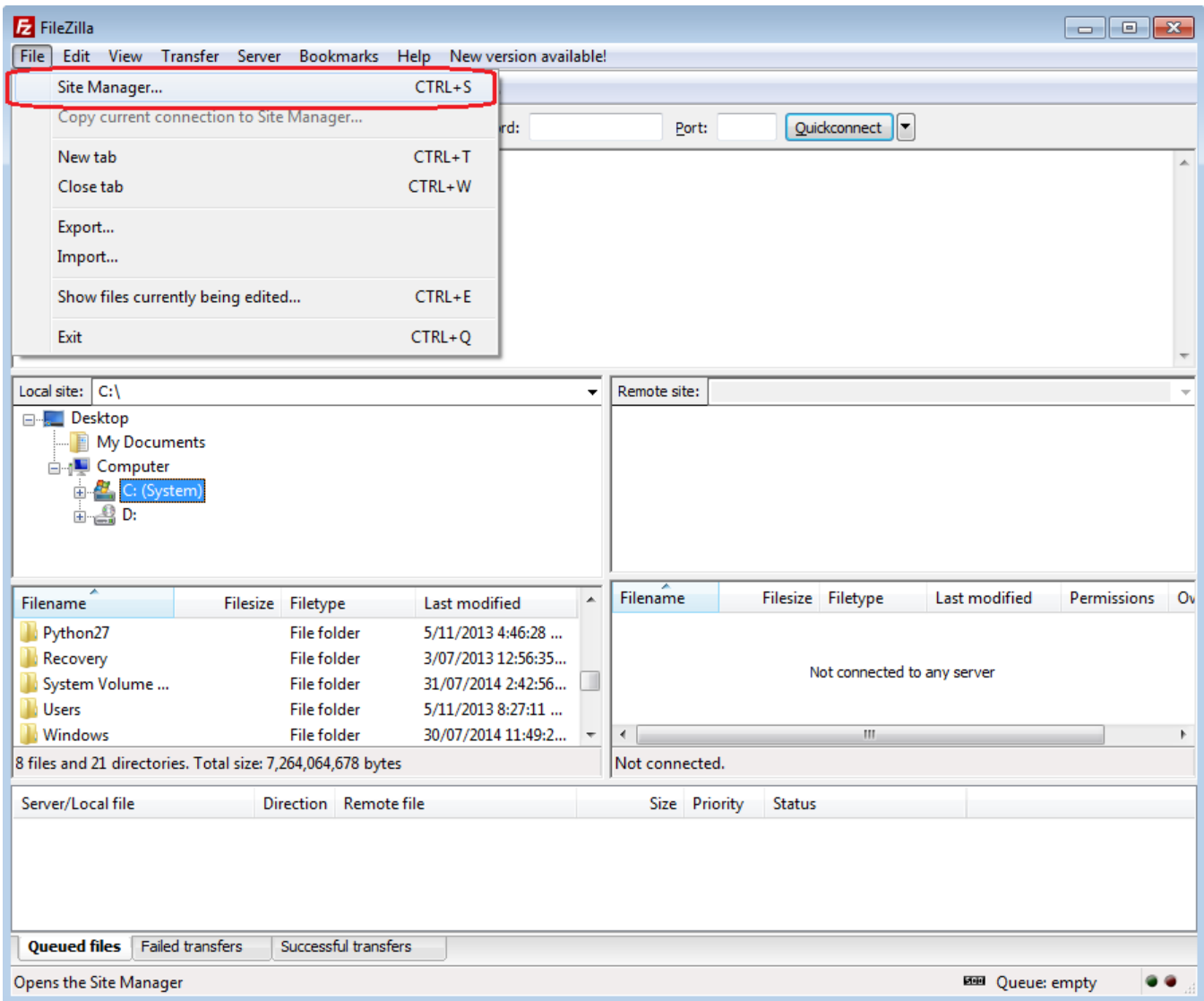


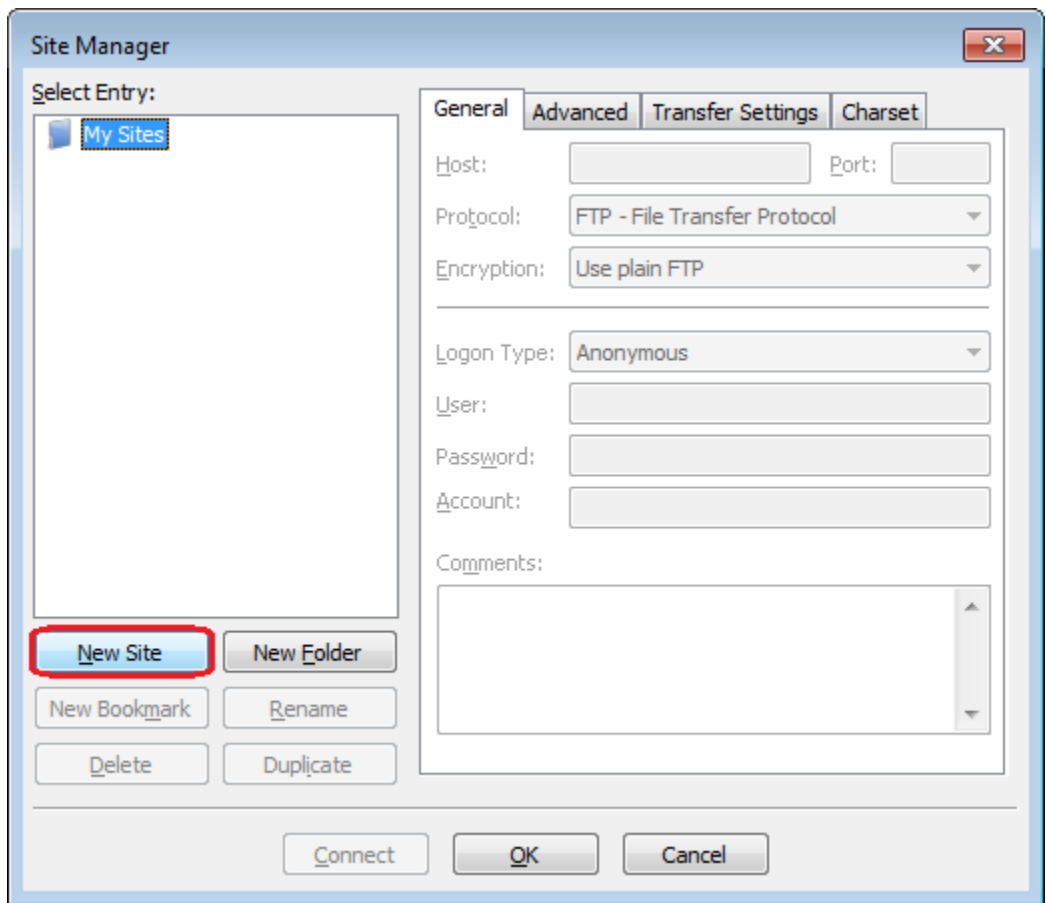
Using FileZilla with SSH Public Key Authentication

Create a site for use with SSH keys

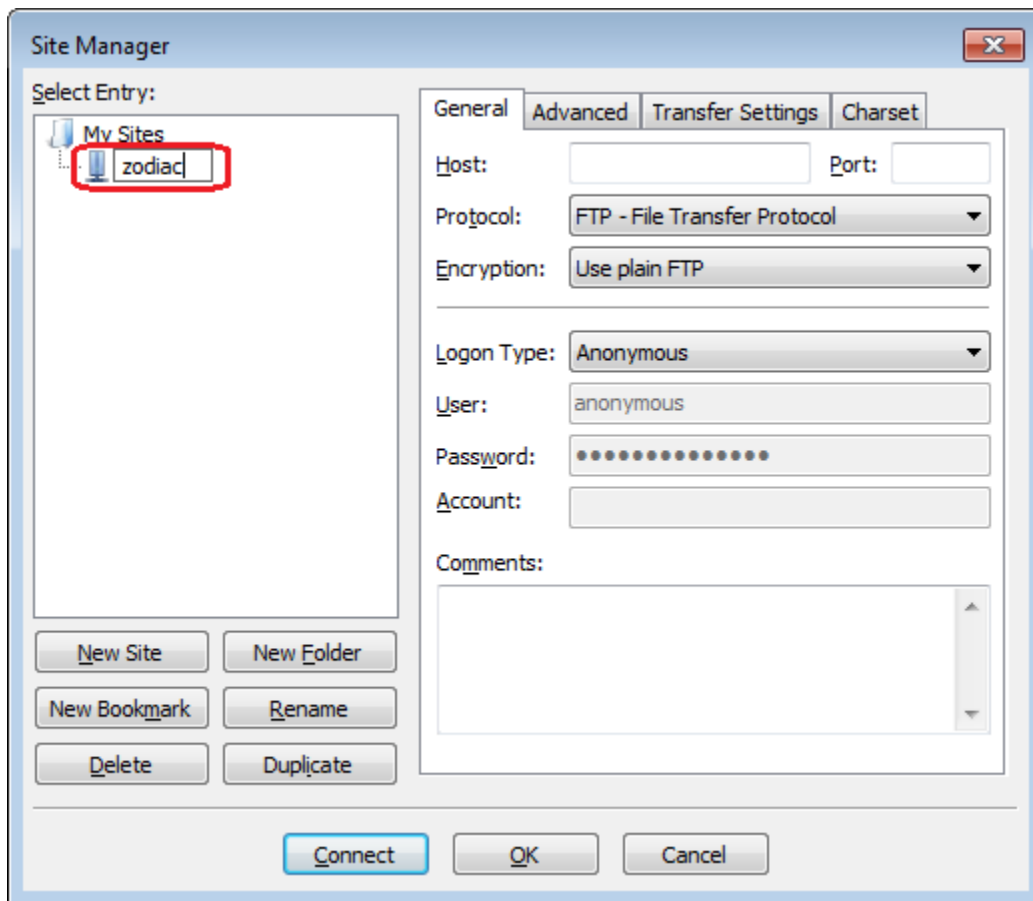
Start FileZilla and Select the File -> Site Manager menu item.



Press the New Site button.



Give your new site the name zodiac

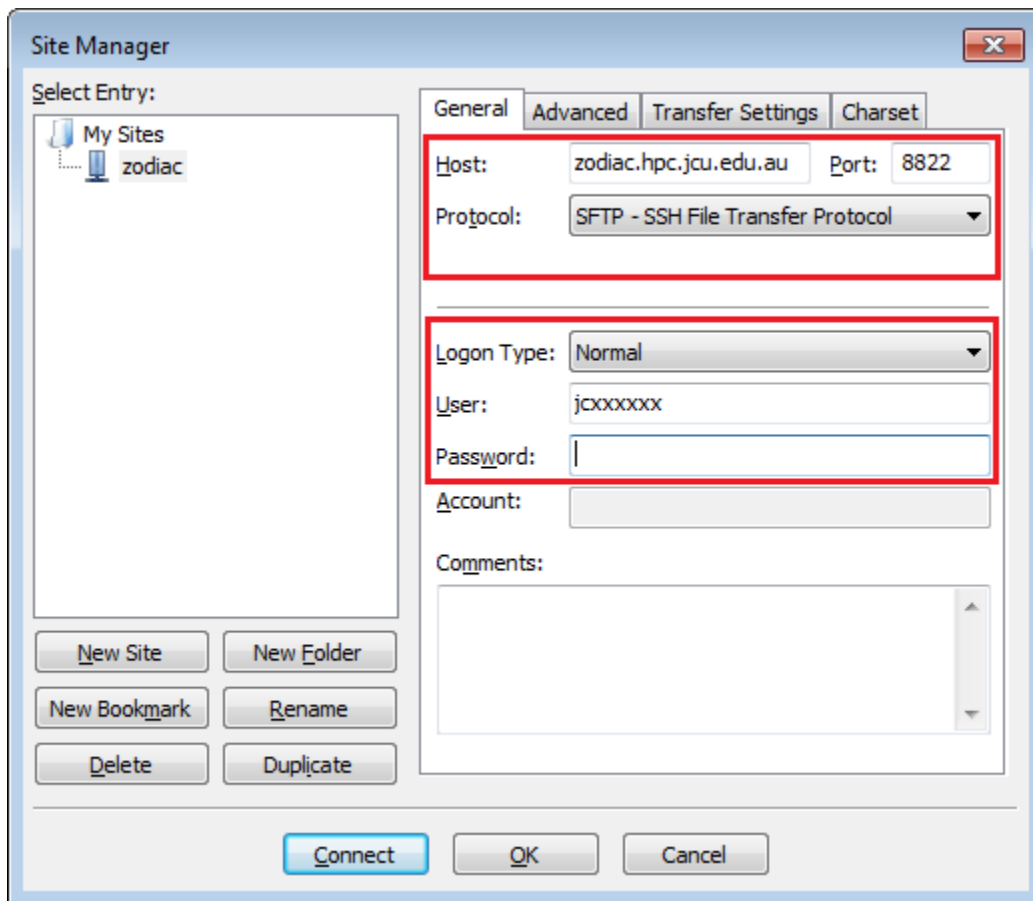


Set the following Host settings:

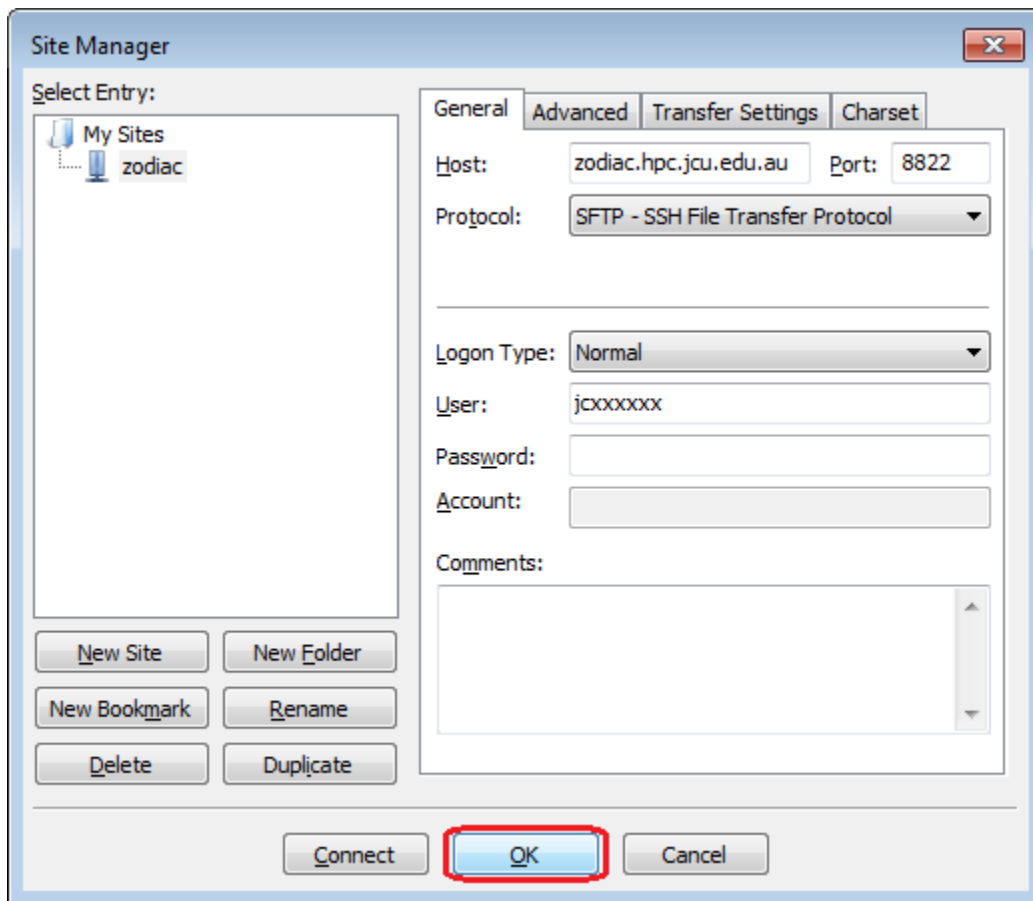
- Host: zodiac.hpc.jcu.edu.au
- Port: 8822
- Protocol: SFTP - SSH File Transfer Protocol

And the following account settings:

- Logon Type: Normal
- User: <your_user_name>
- Password: <empty>



Press the OK button:



Connect to site

Drop down the site list and select your `zodiac` site

